

Piezoelectric Blood Pressure Sensors

Pro-Wave's new line of piezoelectric pressure sensors are designed specially for digital blood pressure monitors, which has one piece molded air pressure pipe bonded with sensor cable.

All piezoelectric pressure sensors are supplied with a high sensitivity piezoelectric ceramic element glued with a metal diaphragm by using a rigid bonding agent. A built-in low noise junction field effect transistor housed in a plated metal housing. Standard version of piezoelectric pressure sensor has an 1.3 meter of one piece shielding cable bonding with air pressure pipe, and a molded 2.5 mm diameter phone plug at other cable end.



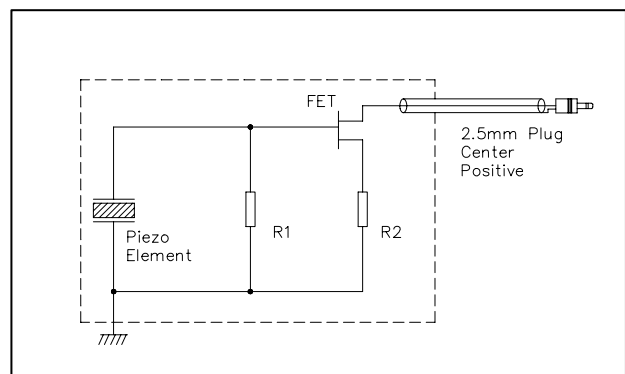
Features

- High mechno-electrical sensitivity
- Low impedance output
- Wide operation temperature
- Molded air pressure pipe bonded with shielding cable

Applications

- Sensors for digital blood pressure monitor
- Sensors for machine health monitors
- Sensors for car burglar alarms home security and etc.

Equivalent circuit



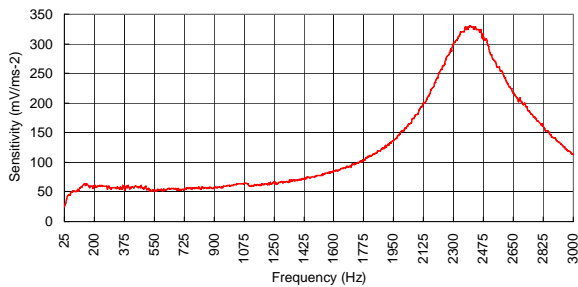
S. Square Enterprise Company Limited
Pro-Wave Electronics Corporation

Piezoelectric Blood Pressure Sensors

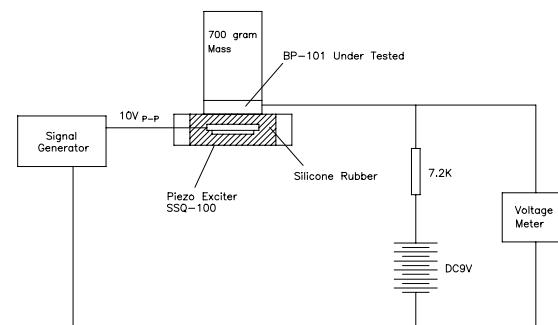
Specification

Model number	BP-2401 (with air pressure pipe) BP-2402 (without air pressure pipe)
Voltage sensitivity	40mV/ms ⁻²
Lower frequency limit	30Hz
Upper frequency limit	1000Hz
Resonant frequency	2,400 ± 20% Hz
Operation voltage	DC 3 – 30 volts
Operation temperature	-20 to +60°C
Storage temperature	-40 to +80°C

Frequency Response



Measuring Circuit



Dimension

